



**Wine Rack  
Assembly Instructions**

**Diamond Bin**



**Classic Series**



**Estate Series**

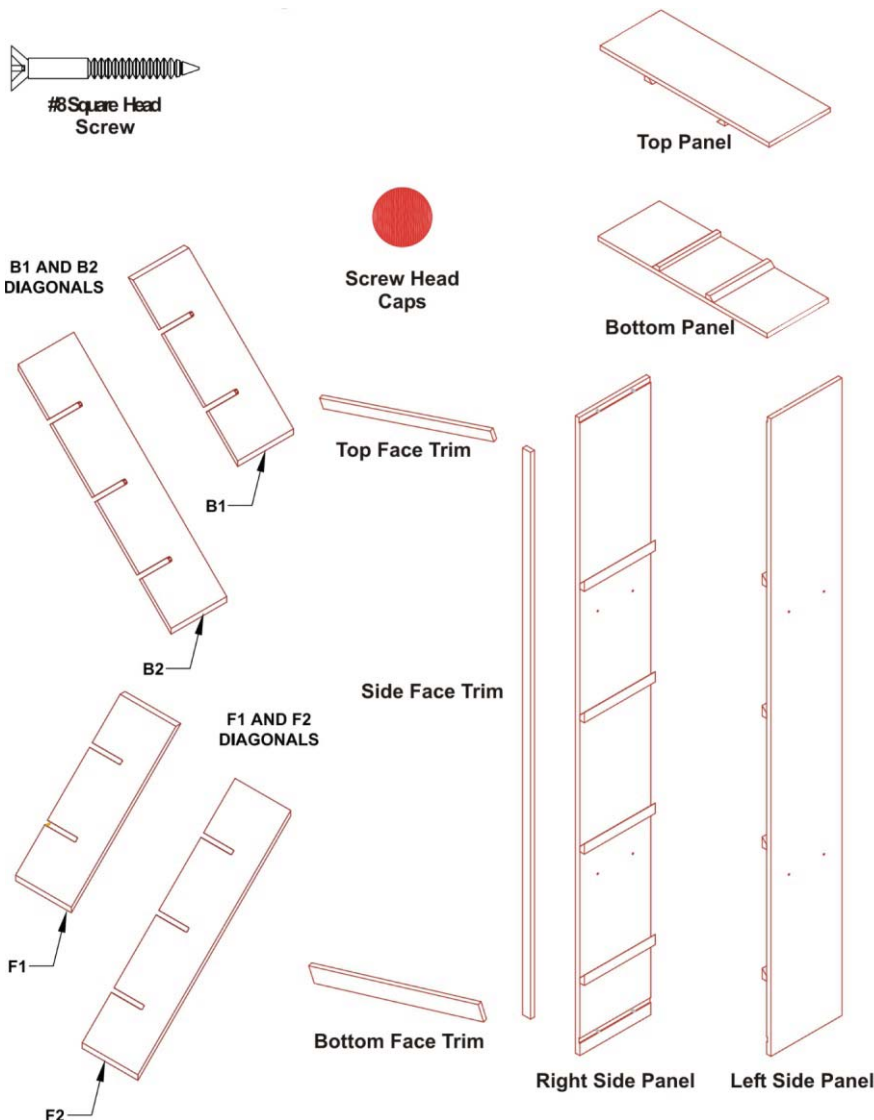
Congratulations! You have purchased the finest wine racking available anywhere. Properly assembled, these Vigilant wine racks will outlast even your finest wines. Please call toll free **888-812-4427** if you have any questions or problems.

### Tools Required for Assembly:

- Phillips Head Screwdriver
- 9/64" drill bit
- #2 Square drive bit
- Hammer, preferably rubber or soft-faced
- Wood glue (*to be used at all joints*)
- Finish nails (not provided)
- Hammer for finish nails

### Parts List:

Before starting, carefully review the parts and quantities against the parts list to make sure you have everything you need. Then read through the instructions, taking time to familiarize yourself with the pieces and steps.



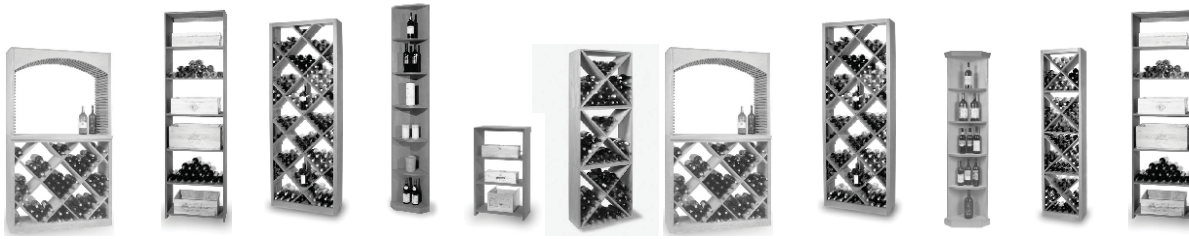
### **Classic Series (77 1/2" high)**

- 2 Side Panels (77 1/2" long)
- 1 Top Panel (32 25/32" long)
- 1 Bottom Panel (32 25/32" long)
- 2 B1 Panels (22 11/32" long)
- 3 B2 Panels (46 1/32" long)
- 2 F1 Panels (22 11/32" long)
- 3 F2 Panels (46 1/32" long)
- 8 #8 Square Head Screws (1 1/4" long)
- 8 Screw Head Caps
- 1 Top Face Trim (31" long)
- 2 Side Face Trim (77 1/2" long)
- 1 Bottom Face Trim (31" long)

### **Estate Series (92 1/2" high)**

- 2 Side Panels (92 1/2" long)
- 1 Top Panel (32 25/32" long)
- 1 Bottom Panel (32 25/32" long)
- 2 B1 Panels (32 15/16" long)
- 3 B2 Panels (46 1/32" long)
- 2 F1 Panels (32 15/16" long)
- 3 F2 Panels (46 1/32" long)
- 8 #8 Square Head Screws (1 1/4" long)
- 8 Screw Head Caps
- 1 Top Face Trim (31" long)
- 2 Side Face Trim (92 1/2" long)
- 1 Bottom Face Trim (31" long)

### **Parts List**



### Tips: For Building Your Bins and Cases

Do not use a power drill when tightening your screws. If you do you could pierce the outside of the wood.

Before assembling your wine storage bin or case place a blanket down. You want a clean and scratch free surface during assembly.

It is recommended to use glue at joints when ever possible to make the joint stronger.

Pre-drill all screw holes with a 9/64" drill bit. This makes it less likely for your wood to split. (The easiest way to do this is to follow the pre-drilled holes provided on certain pieces as your guide.)

When assembling your case work make sure that all front edges are flush to one another.

Align the front of your case work to the front spacer bar of the adjacent racking. (This is true for every item except the Quarter Round, where you will line the filler strip up to the front of the spacer bar.)

When lining your case work up with adjacent racking, it may be pulled out slightly from the wall and therefore not able to be attached to a wall stud. We recommend securing it to the adjacent racking on both sides or purchasing L-Brackets from your hardware store to attach it to the wall.

When attaching your assembly to adjacent racking or other case work we recommend using clamps to hold the pieces together before securing with screws.

When attaching case work to racking, drill a hole through the side at a discrete location like the very top or below a shelf.

If you are attaching a 10 Column Soffit Arch above a Diamond Bin Table Base, it is recommended to not attach the outer face frame on the Diamond Bin Table Base. This will allow easy access to the diagonal panels for easy removal when attaching the arch through the top of the table base.

### How to Care for Your Stained & Lacquered Wine Racks

Your Vigilant wine racks are built using the highest quality wood and finish available. When properly cared for, your wine racks will last longer than your finest bottles of wine. Here are a few tips on maintaining the quality and consistency of your racking.

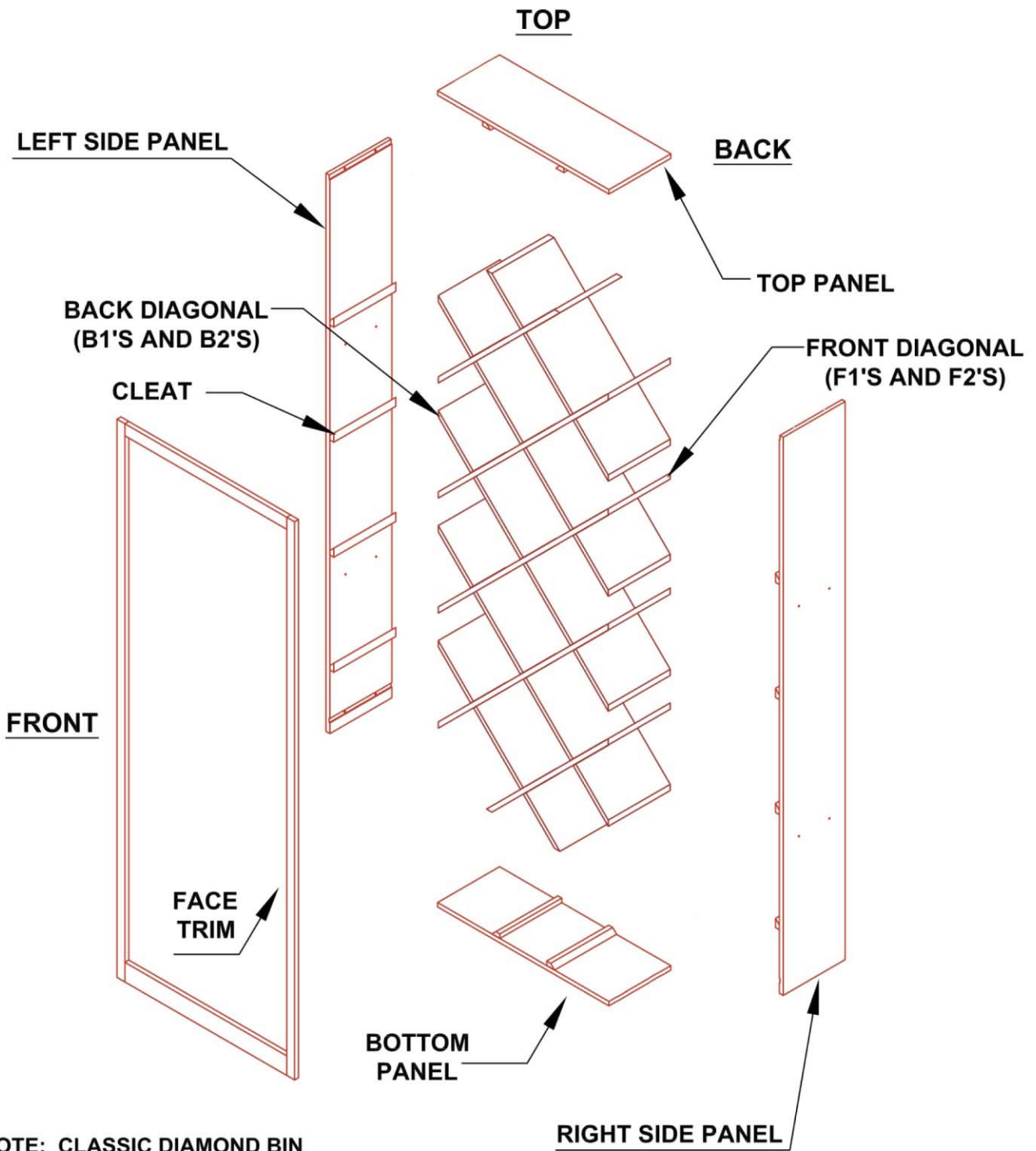
**Remove Dust:** Dust build up from small airborne particles may scratch the surface if not removed correctly. Simply wipe the surface with a cloth dampened with a cleaning polish or mild detergent.

**Clean:** Fingerprints, cooking fumes, smoking residue, etc., accumulate on any surface. None of these contaminants will harm our Satin lacquer finish, but they should be periodically removed, to restore the finish to its original luster. Just wipe the surface with a cloth dampened with a non-wax containing polish or mild detergent solution. Avoid the use of ammonia based products or silicone oil, as they may cause damage if used over a long period of time.

Our Satin lacquer finish is durable and resistant to most household spills. However, spills should be wiped up promptly to avoid potential problems.

Excessive prolonged exposure to direct sunlight, high temperatures and high humidity can cause damage to both the finish and the wood itself. These should be avoided.

Following these simple steps will keep your finished wine racks looking like new for many years.

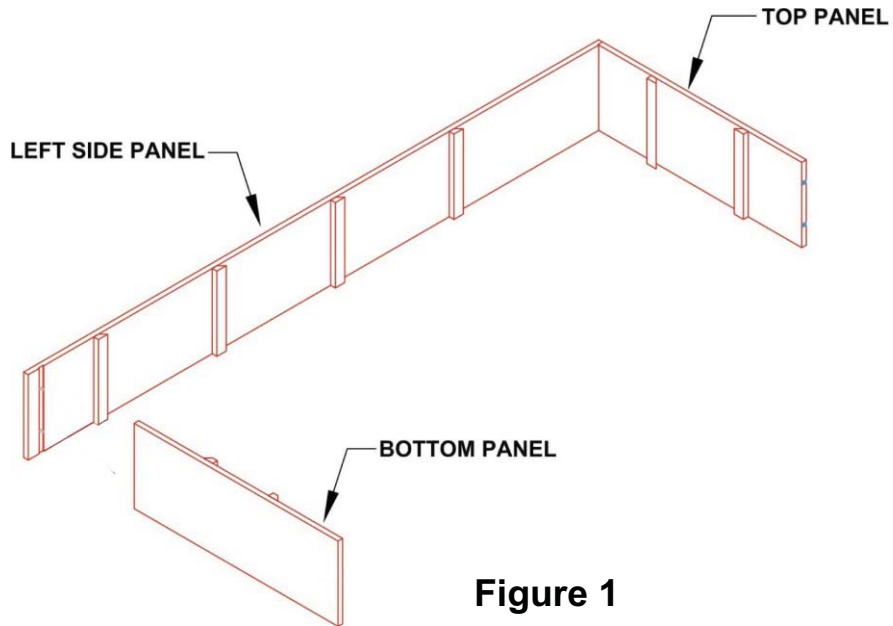


NOTE: CLASSIC DIAMOND BIN (NOT SHOWN) IS SIMILAR TO THE ESTATE DIAMOND BIN (SHOWN) WITH THE EXCEPTION THAT THE F1 AND B1 DIAGONALS WILL HAVE ONLY ONE DADO (SLOT)

**Exploded View**

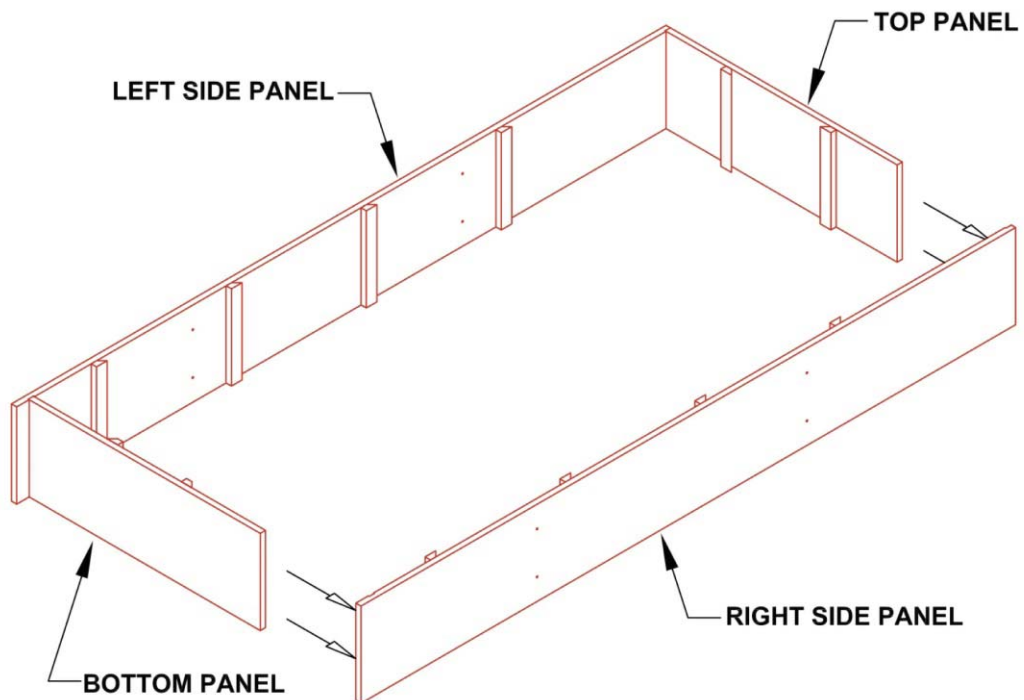
## Steps to Assembly

1. Locate your top, bottom and side panels. The two side panels have pre-drilled holes (See **Exploded View**).
2. Attach the top and bottom panels to the left side panel using the pre-drilled holes and screws provided (**Figure 1**).



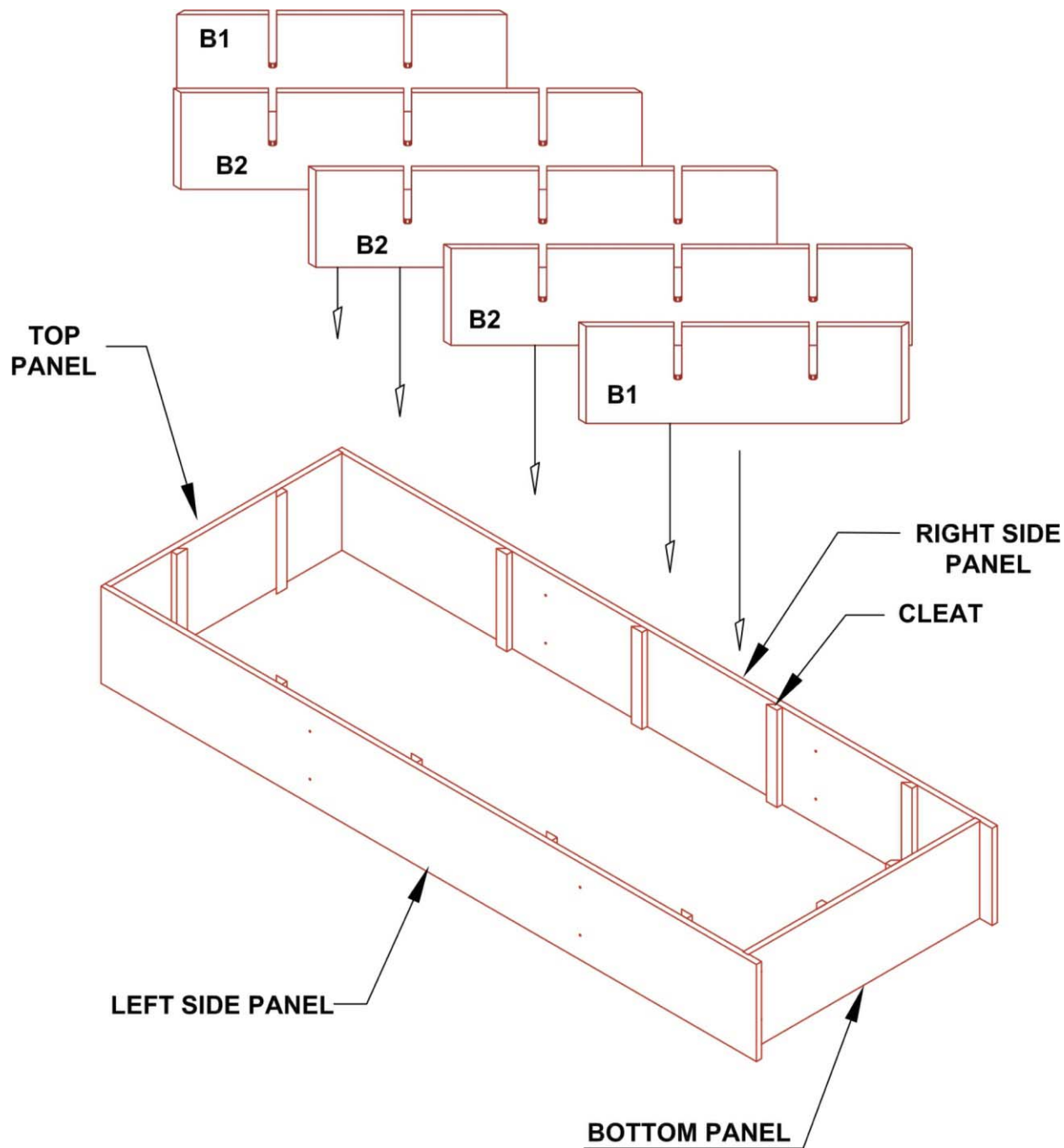
**Figure 1**

3. Attach the right side panel to the top and bottom panels using the pre-drilled holes and screws provided. Your outer frame should now be assembled (**Figure 2**).



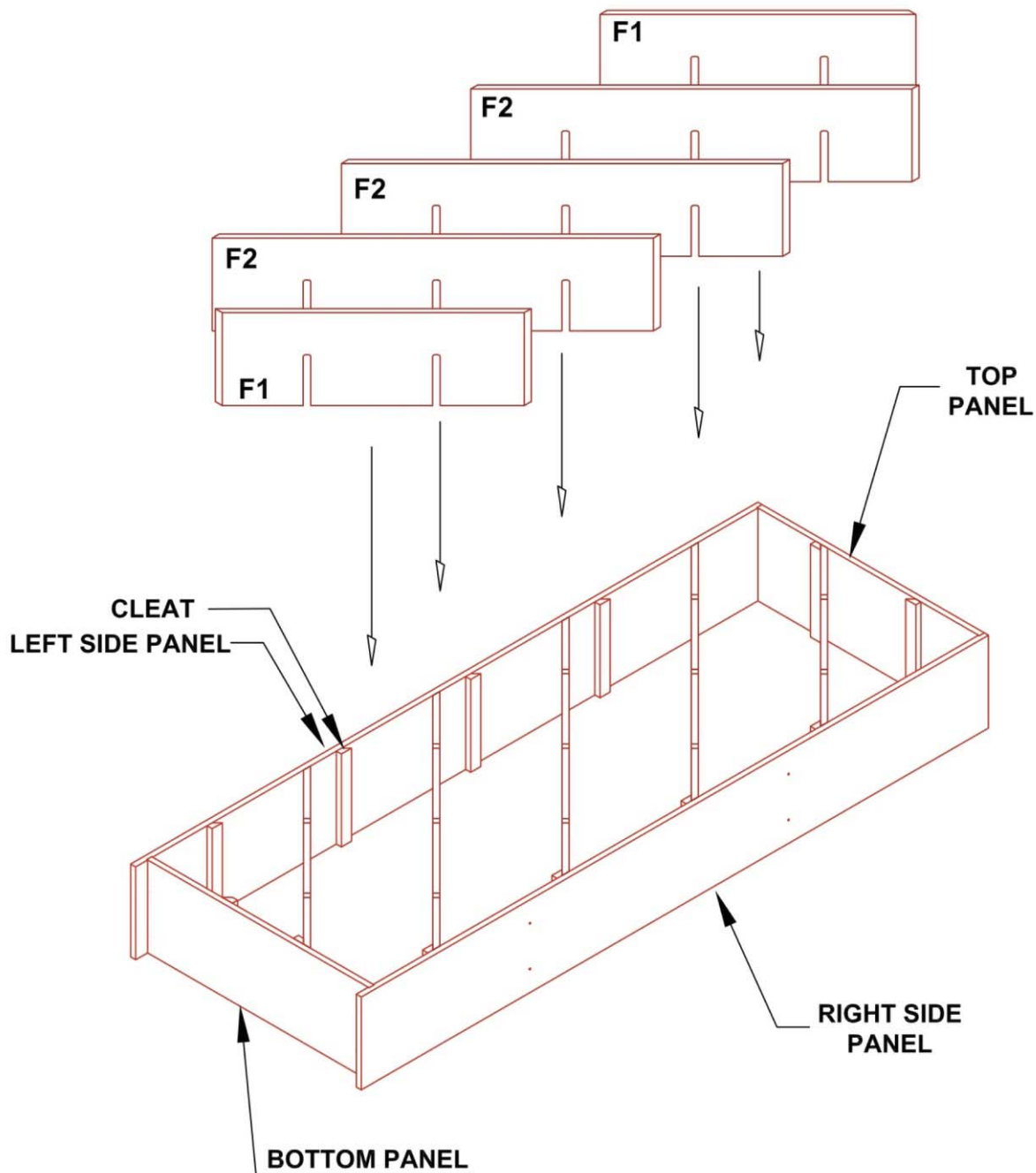
**Figure 2**

4. Locate panels labeled B1 (2) and B2 (3). In order to ensure the panels are in the appropriate position, align the bottom of panels B1 and B2 with the right side cleats. All of these panels should be angled with the higher end on the left and lowest point on the right (**Figure 3**). Insert panel B1 in the upper right hand corner. Work your way down by inserting all remaining B2 panels and finish by inserting the second B1 panel into the lower left hand corner. (*\*Please note: when installing the back diagonals that the dados (or slots) need to be facing the front of the bin.*)



**Figure 3**

5. Locate the panels marked F1 (2) and F2 (3). Again, using the cleats as your guide, align the bottom of the panels with the left side cleats. Insert panel F1 in the upper left hand corner, fitting the slot in the center of the panel over the top of the slot in panel B1. After you have inserted panel F1, work your way down by inserting all remaining F2 panels and finish by inserting the second F1 panel in the lower right hand corner (**Figure 4**). (\*Be sure to carefully align the edges of the inside panels so that they are flush with both the front and back edges of the side, top and bottom panels. You may need to use a soft-faced hammer or mallet to ensure a proper fit over the back panels.)



**Figure 4**

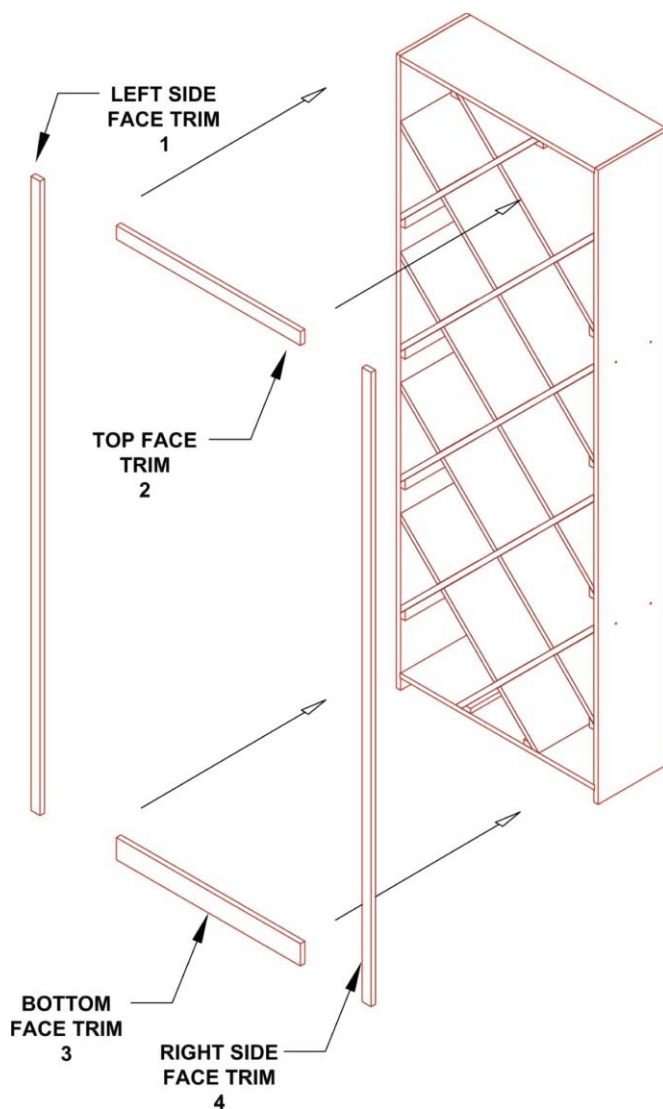
6. Once you have all the panels aligned, pre-drill your screw holes by drilling through the holes in the side panels and into the diagonals using the 9/64" drill bit. Attach using the screws provided. This will add additional support to your assembly. Your assembly is ready stand upright.

7. Locate your (4) face frame pieces. Take one of the long side pieces and line it up flush to the left side. Attach to the bin in several locations with finish nails (not provided). Repeat this step with your top frame (**Figure 5**).

*\*Note: If you do not want the Vigilant Brand showing you can peel the emblem off. If there is any markings left from the emblem, reverse the top piece so that the emblem side is the attached side.*

8. When attaching your bottom frame, be sure to have it flush with the floor and flush with the left side piece of your face frame. Attach in the same manner that you have attached the previous frames.

9. Locate your right side frame. Make sure that this frame is flush with the top and bottom pieces. Attach the same way you attached the face frame in steps 7 and 8 (**Figure 5**).



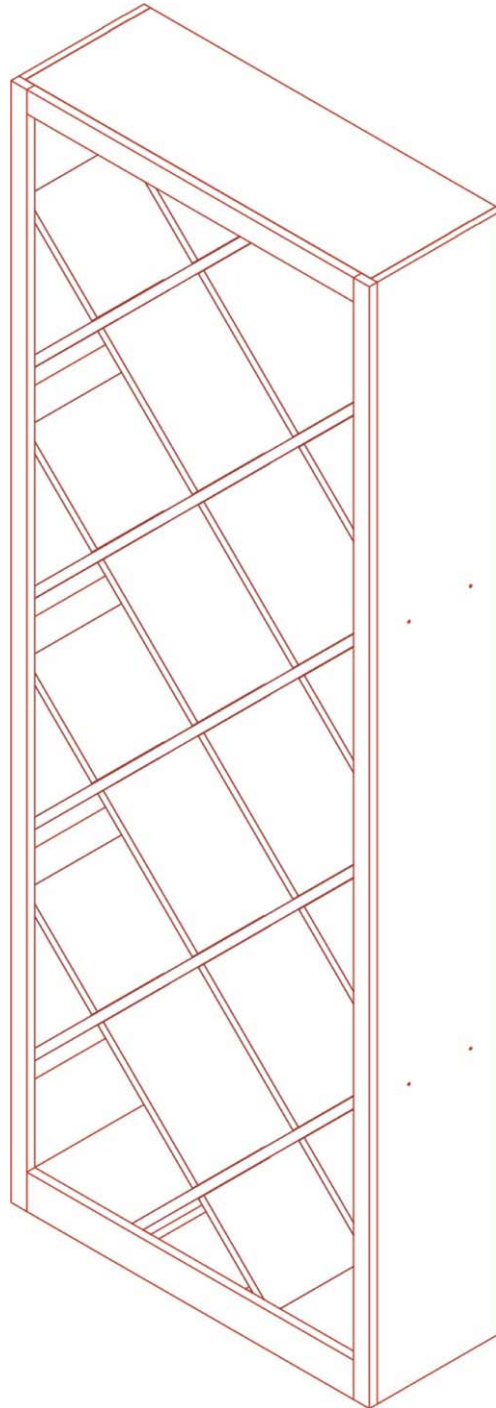
**Figure 5**



10. Place screw head caps on all exposed screw heads.

11. Your wine rack is now complete and ready to be moved to its final location. The rack should be placed with its back against a wall and be shimmed to level, front to back and side to side.

*\*\*Failure to attach the rack to the wall could result in the rack tipping over. When fully loaded with wine your rack will weigh 600lbs. for the Classic Series and 725lbs. for the Estate Series.*



**Finished Diamond Bin**

*Additional installation questions?*  
*Contact us:*



VIGILANT, INC.  
85 Industrial Park Drive  
Dover, NH 03820  
Toll Free 1-888-812-4427  
Outside US 1-603-285-0400  
Fax 1-603-285-0420  
email: [info@vigilantinc.com](mailto:info@vigilantinc.com)  
On the web [www.vigilantinc.com](http://www.vigilantinc.com)